

# An ISIS Project Sampler

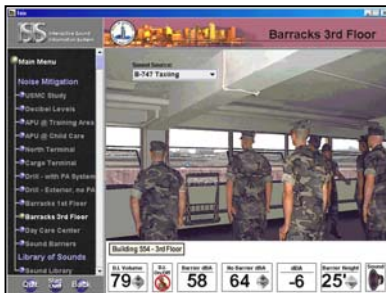


## Montréal

The Montreal program, with displays in French and English, can show aircraft arriving and departing all runways. Listening points are provided beyond runway ends. The program is linked to the airport's GIS system and displays land compatibility ratings for noise impacted properties.

## Naples Florida

Naples Airport initiated a prohibition on older business jets. A custom ISIS program illustrates the acoustical difference between older and newer aircraft. It is possible to hear the Stage II to Stage III differences from listening positions throughout the community.



## San Diego

Several special programs were created for San Diego. One demonstrated the acoustic protection provided by a noise barrier when a taxiway was moved closer to noise sensitive activities. Another mixed airport, road and train noise to illustrate how each contributes to the total noise environment.

## Toulouse-Blagnac

The Toulouse program demonstrates noise impacts of the main and parallel runways. It also includes a feature that demonstrates arrivals and departures as heard from a selection of listening positions.



## Jacksonville - Craig Field

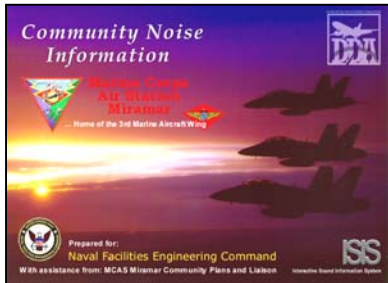
A proposed runway extension at Craig Field permits the landing thresholds on the main runway to be moved farther from nearby residences. ISIS was used to demonstrate how extending the runway would reduce noise levels in impacted neighborhoods.

## National Park Service

The Park Service sponsored a presentation demonstrating how reuse plans for Homestead AFB might impact the Everglades National Park and Biscayne National Park.



More examples on the next page . . .

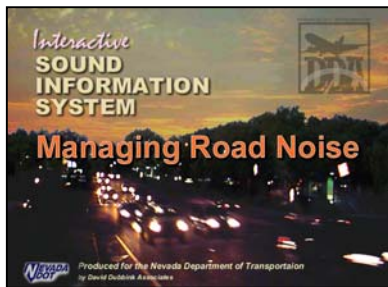


## US NAVY – MARINE CORPS

Multiple programs were developed in support of training and Air Installations Compatible Use Zones (AICUZ) projects. The programs include components dealing with helicopter overflights, landing practice and weapons firing.

## Tampa

The program prepared for Tampa includes illustrations of 3D flight tracks. It also features components that explain and illustrate the effectiveness of the airport's noise insulation program.



## Nevada DOT

Roadway noise and its management is the centerpiece of the program prepared for the Nevada Department of Transportation. It includes 3D views of the noise accumulation along a highway system and “live” video of highway traffic.

## Other ISIS Customers Include:

AirPlan, Melbourne*	Sabre Technologies*
Aviation Environmental Improvement Center (Tokyo)*	San Francisco International Airport*
Braunstien and Berndt, Stuttgart*	San Jose International Airport*
Chicago O'Hare International Airport*	Seattle Tacoma (SEATAC) Airport*
Cincinnati, Lunken Airport*	State College, PA
City of Botany Bay, Australia*	Tampa International Airport*
City of Oceanside (California)	Technical University of Delft (Netherlands)*
City of Oxnard (California)	Toronto, Parallel Runway Hearings
City of Thousand Oaks (California)	Transport Canada*
Dallas Ft Worth Airport	Umwelt Bundes Amt, Berlin*
Direction General de l'Aviation Civil (France)*	US Air Force, Armstrong Laboratory*
Dublin International Airport (Ireland)*	US Army, Corps of Engineers*
Edmonton Airport (Canada)*	US Federal Aviation Administration*
FAA Academy, Oklahoma City	US Navy/Marine Corps*
Hong Kong Mass Transit Railway Corp.*	University of California, Berkeley
Las Vegas, McCarran Airport*	University of California, Davis*
Marshall Day Acoustics, Melbourne*	Van Nuys Airport
Miramar Marine Air Station, California*	Vancouver, B.C.; Parallel Runway Study.
Oceana Naval Air Station, Virginia*	Wyle Laboratories*
Rhode Island (Province) Airport*	

\* ISIS licensees

*We've become experts at engineering our products to fit the needs of our diverse client base. The ISIS program is designed for flexibility and can be easily adapted to local situations. Versions can be produced in different languages and in conformance to a variety of noise metric systems.*